

# ADIRONDACK PARK LAND USE AND DEVELOPMENT PLAN MAP AND STATE LAND MAP

1999  
STATE OF NEW YORK  
ADIRONDACK PARK AGENCY



OFFICE OF PUBLIC CONSERVATION    RICHARD H. LITVIN, COMMISSIONER    DANIEL E. WITEL, EXECUTIVE DIRECTOR

**PRIVATE LAND CLASSIFICATION**

Forest
Residential Intensity Use
Low Intensity Use
Scenic Use
Resource Management
Industrial Use

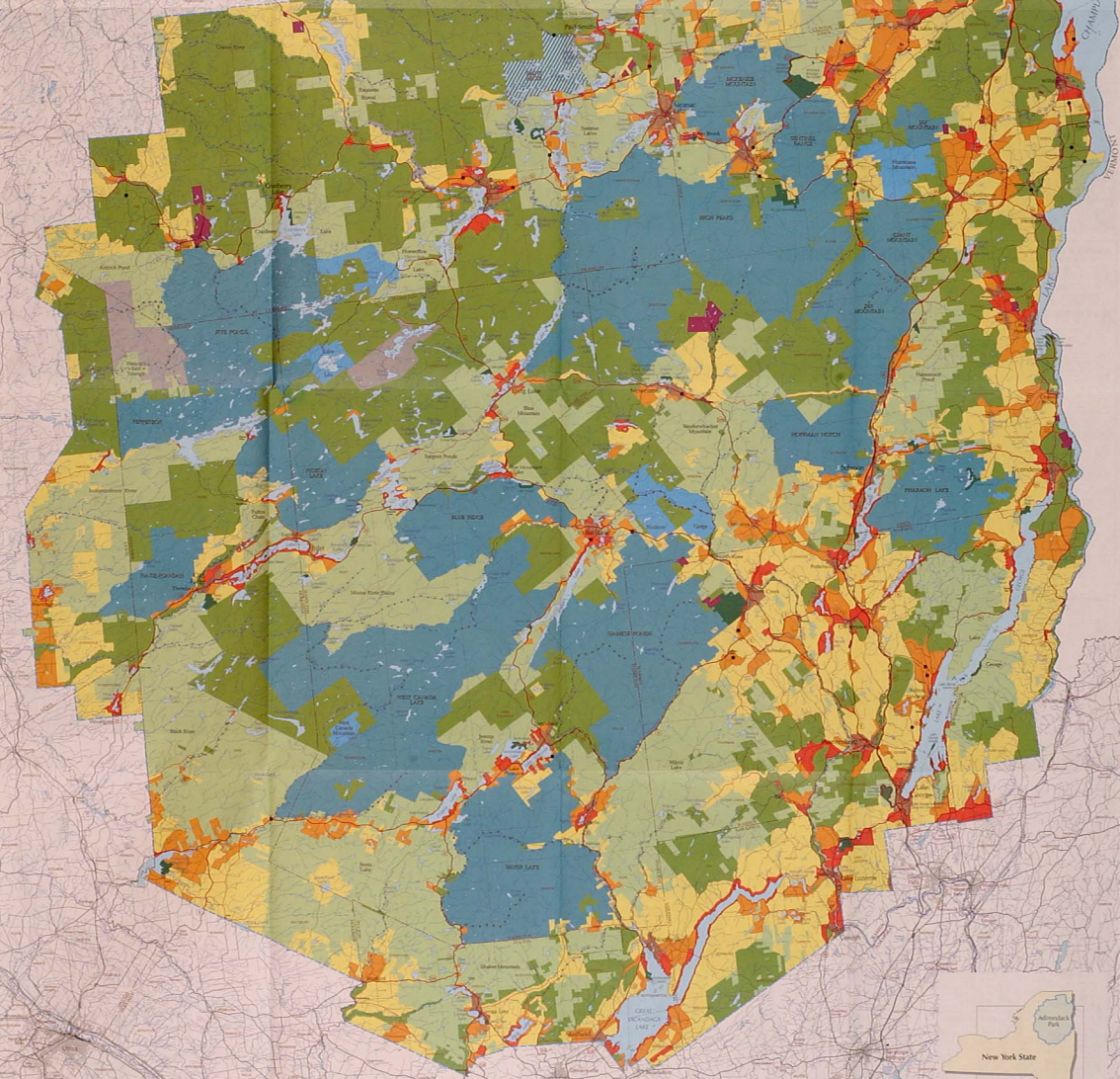
**STATE LAND CLASSIFICATION**

Wilderness
Conservation Area
Wild Forest
Intensive Use
Recreational
Pending Classification
Some Vio

ADIRONDACK: PORTION OF THE NEW YORK STATE  
WILD, SCENIC AND RECREATIONAL RIVER SYSTEM

Legend for Wild, Scenic and Recreational River System:  
 \*\*\*\*\* Wild  
 ..... Scenic  
 - - - - - Recreational  
 - - - - - State  
 - - - - - Local

Revised Map 2/8, 2008



**1** This map is a general representation of the land use and development plan for Adirondack Park. It is not intended to be used as a legal document. The map is based on the most current data available at the time of printing. The Adirondack Park Agency reserves the right to modify the map at any time without notice.